



INSPIRE – an efficient way to share European spatial data!

Government authorities, businesses and citizens need to easily share and use spatial data for making the right decisions about our environment and well-being in a timely manner



Nationally, across borders or EU-wide

Policymakers, researchers, data scientists and IT developers use spatial data every day.



- It is **structured differently**, using different terminology and formats
- Sometimes it is **hard to find**
- Sometimes they do not even know it exists

How can they find, access and combine their spatial data quickly and seamlessly?

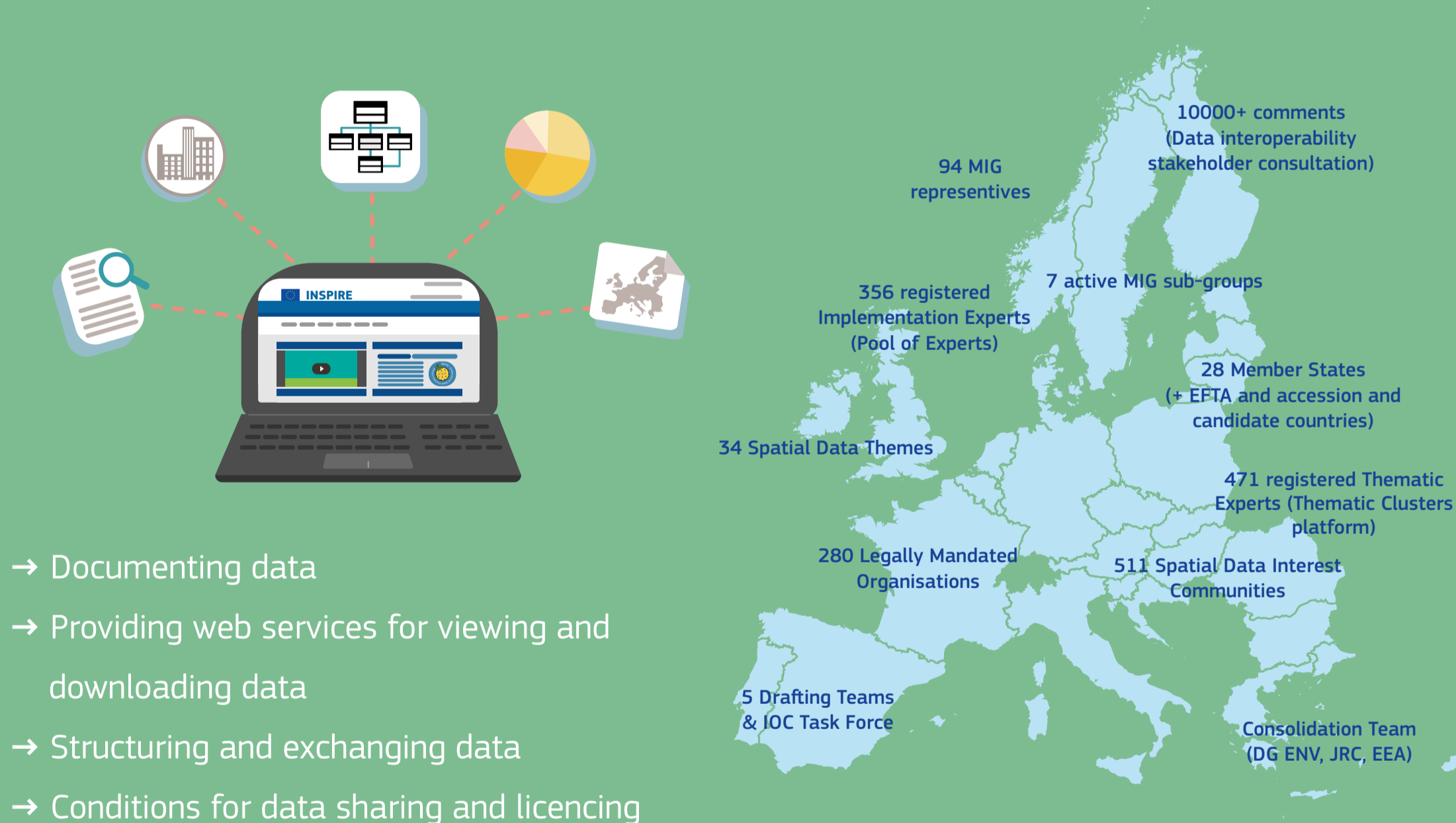
The **INSPIRE** infrastructure provides access to a wealth of spatial data from a variety of themes, from protected sites to industrial facilities.

These data can be shared and used easily across domains and countries as they follow common rules and standards.



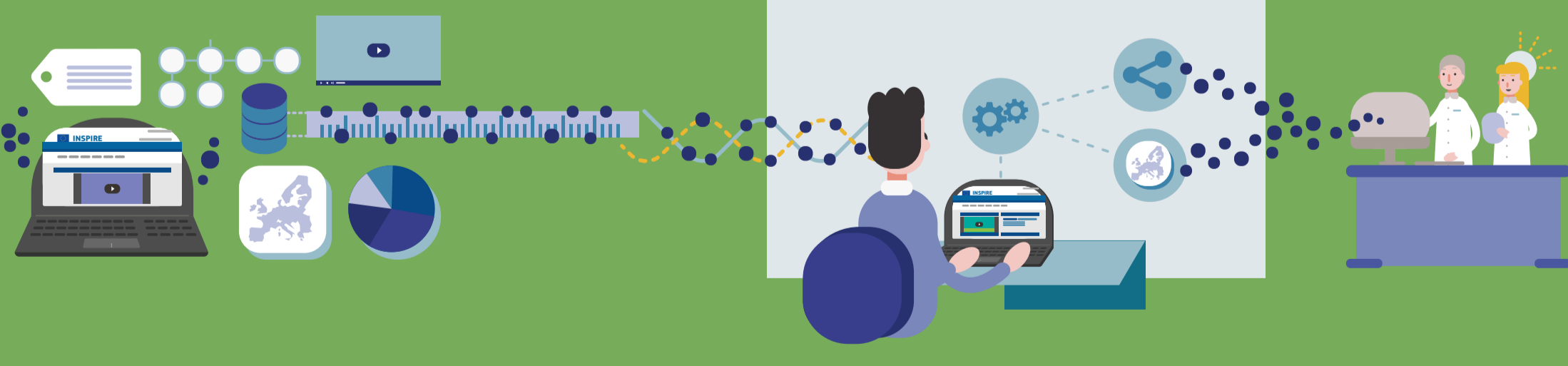
The **INSPIRE** Geoportal is the central access point to the infrastructure for searching, viewing and downloading spatial data.

The **INSPIRE** infrastructure is based on agreed European standards, which were developed in close collaboration with a wide community, ranging from government authorities to individual experts. These include standards for:



- Documenting data
- Providing web services for viewing and downloading data
- Structuring and exchanging data
- Conditions for data sharing and licencing

The **INSPIRE** Knowledge Base provides comprehensive material for implementers in the Member States



- Learn** – INSPIRE basics and training
- Implement** – a guided tour of tools and resources
- Use** – a central access point for spatial data and best practices
- Participate** – join the community and make INSPIRE work for you!

INSPIRE Knowledge Base
inspire.ec.europa.eu

E-mail
inspire-info@jrc.ec.europa.eu

Twitter
https://twitter.com/INSPIRE_EU
[@inspire_eu](https://twitter.com/inspire_eu)

Linkedin
<https://www.linkedin.com/groups/1066897>

Facebook
<https://www.facebook.com/groups/inspiredirective/>

Joint
Research
Centre